

Linear Standard Kit 12

LN-K-3P-12

Linear Standard Kits provide a modern, slick and stylish appearance. The extrusion based exhibits feature **NEW** velcro-applied fabric graphics. Headers and wings available in UV printed graphics or frosted plex.



features and benefits:

- Custom appearance
- Easy to assemble
- **NEW** velcro-applied fabric graphic
- Table tops available in four color options
- Aluminum construction: vertical extrusions 75 mm x 50 mm
- Installation tool included
- Comes with your choice of frosted plex or PVC graphic panels
- Kit includes two OCH cases, three straight leg tables, and four 50 watt spotlights
- Lifetime hardware warranty against manufacturer defects

dimensions:

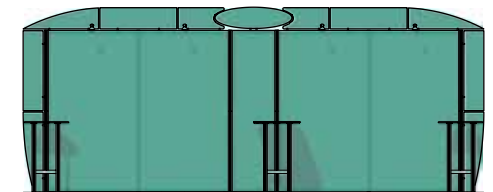
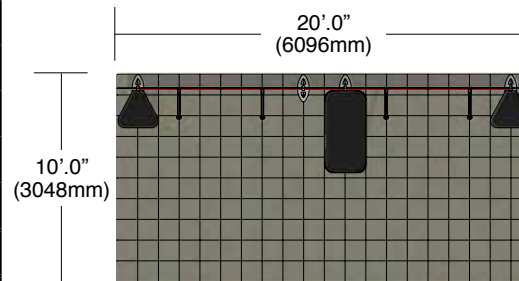
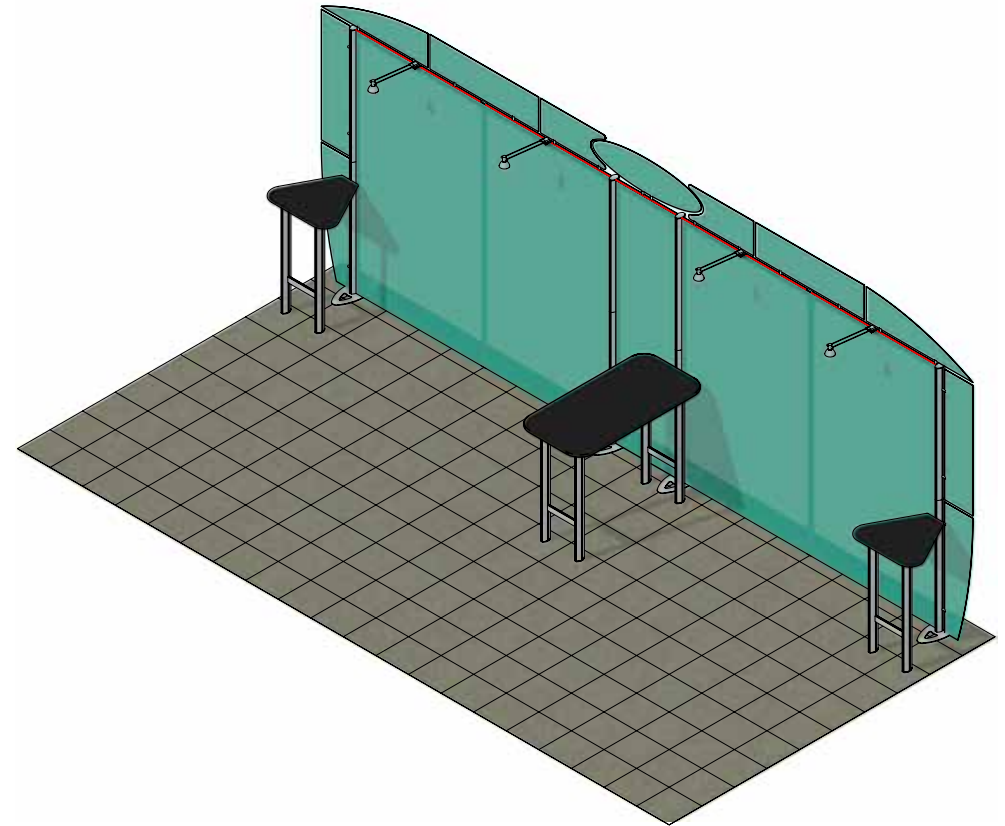
Hardware	Graphic
Assembled unit: 239.9" w x 96.125" h x 56.6" d approx. 6094mm(w) x 2441.5mm(h) x 1438mm(d)	Header panels: Total visible area: 230.3" w x 11.05" h 5849.6mm(w) x 280.7mm(h)
Shipping	Wing panels: Total visible area: 10.4" w x 83.26" h 264.2mm(w) x 2114.8mm(h)
Shipping dimensions - ships in two cases OCH case: 48" l x 24" w x 10" h 1219mm(l) x 610mm(w) x 254mm(h)	Center panel: Total visible area: 208.5" w x 83.26" h 5295.9mm(w) x 2114.8mm(h)
Approximate shipping weight (entire kit): 245 lbs/ 111.2 kg	Total visible area: 230.3" w x 94.3" h 5849.6mm(w) x 2395.2mm(h)
	Refer to related graphic template for more information

additional information:

Graphic materials: Center graphic: Oxford	Table top color options:
Headers & wings: single-sided frosted acrylic, or printed PVC	<div><div></div><div></div><div></div><div></div></div> <div>silverblackmahoganynatural</div>

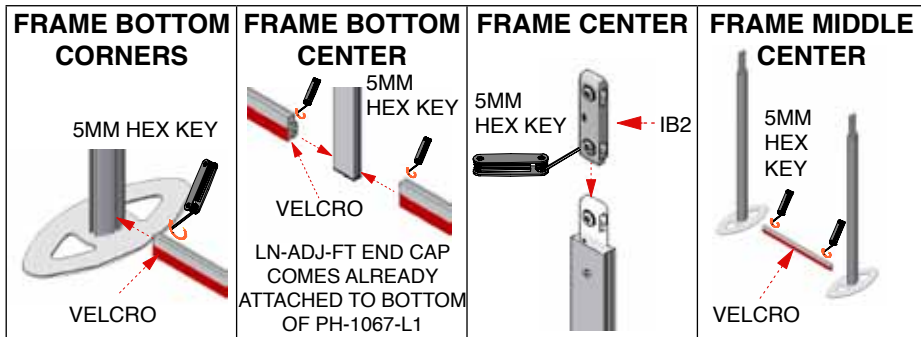
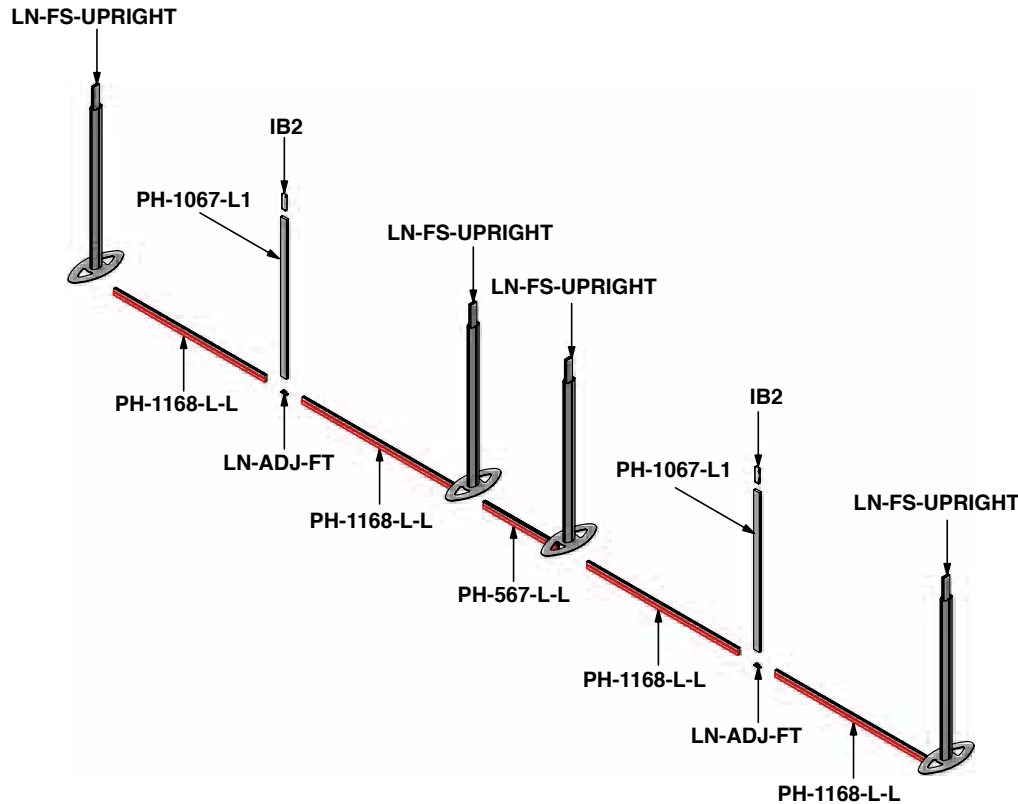
We are continually improving and modifying our product range and reserve the right to vary the specifications without prior notice. All dimensions and weights quoted are approximate and we accept no responsibility for variance. E&OE. See Graphic Templates for graphic bleed specifications.

Parts Included		
Part Label	Qty	Part Description
LN-FS-UPRIGHT	x4	LN-FS-UPRIGHT - LINEAR UPRIGHT WITH FOOT
PH-1168-L-L	x8	1168MM (46") LENGTH OF PH EXTRUSION WITH CAM LOCK BOTH SIDES
PH-1067-L1	x4	1067MM (42") PH WITH LOCK HOLE ONE END
PH-567-L-L	x2	567MM PH WITH LOCK ONE END & CAP
LN-ADJ-FT	x2	LINEAR ADJUSTING FOOT
IB2	x2	INLINE BRACKET
PM3O-1067	x4	1067MM (42") PM3O OPEN ENDS
PM3O-CAP	x12	PM3O GREY MOLDED CAP
LN605-EN	x5	PH END CAP
WME-1000	x12	1000MM (39.375") WIRE MANAGEMENT EXTRUSION W/ VELCRO
LN-10X10-FG	x2	LINEAR 10X10 LEFT & RIGHT LARGE CENTER FABRIC GRAPHICS
LN-C-FG	x1	LINEAR 10X20 CENTER FABRIC GRAPHIC
LN-12-HW-A-G	x1	LINEAR KIT 12 HEADER/WING GRAPHIC A
LN-12-HW-B-G	x1	LINEAR KIT 12 HEADER/WING GRAPHIC B
LN-12-HW-C-G	x1	LINEAR KIT 12 HEADER/WING GRAPHIC C
LN-12-HW-D-G	x1	LINEAR KIT 12 HEADER/WING GRAPHIC D
LN-12-HW-E-G	x1	LINEAR KIT 12 HEADER/WING GRAPHIC E
LN-12-HW-F-G	x1	LINEAR KIT 12 HEADER/WING GRAPHIC F
LN-12-HW-G-G	x1	LINEAR KIT 12 HEADER/WING GRAPHIC G
LN-12-HW-H-G	x1	LINEAR KIT 12 HEADER/WING GRAPHIC H
LN-12-HW-I-G	x1	LINEAR KIT 12 HEADER/WING GRAPHIC I
LN-12-HW-J-G	x1	LINEAR KIT 12 HEADER/WING GRAPHIC J
LN-12-HW-K-G	x1	LINEAR KIT 12 HEADER/WING GRAPHIC K
LN-TBL-RCT	x1	LINEAR RECTANGULAR TABLE TOP * FINISH MAY VARY
LN-TBL-TRI	x2	LINEAR TRIANGLE TABLE TOP *FINISH MAY VARY
LN-TBL-LG	x8	LINEAR TABLE TOP LEG
PH-267-L-L	x4	LINEAR TABLE TOP LEG SUPPORT
CKAPS	x22	CABLE KIT, 7MM PANEL SUPPORT (MULTI ANGLE) AKA LN-P0114-WNT1
PHFC2-150-L	x3	150MM PHFC2 W/ONE LOCK
LN-LT-FXT	x4	LINEAR LIGHT FIXTURE HOLDER
LUM-8	x4	LUMINA 8 LIGHT
ALLEN KET SET	x2	ALLEN KEY MULTI-TOOL (HEX KEY TOOL)



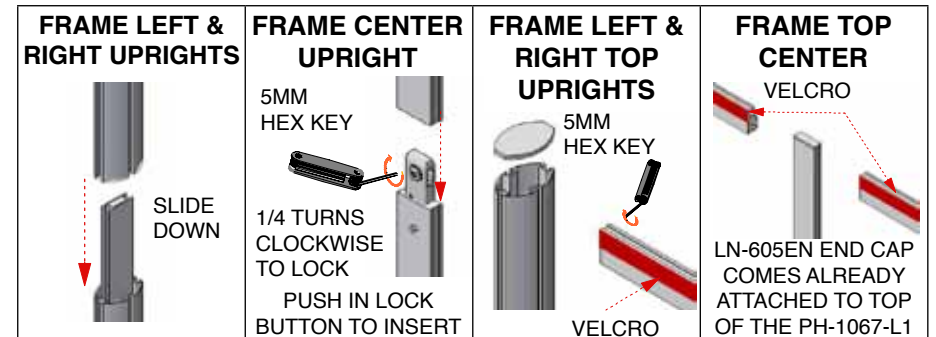
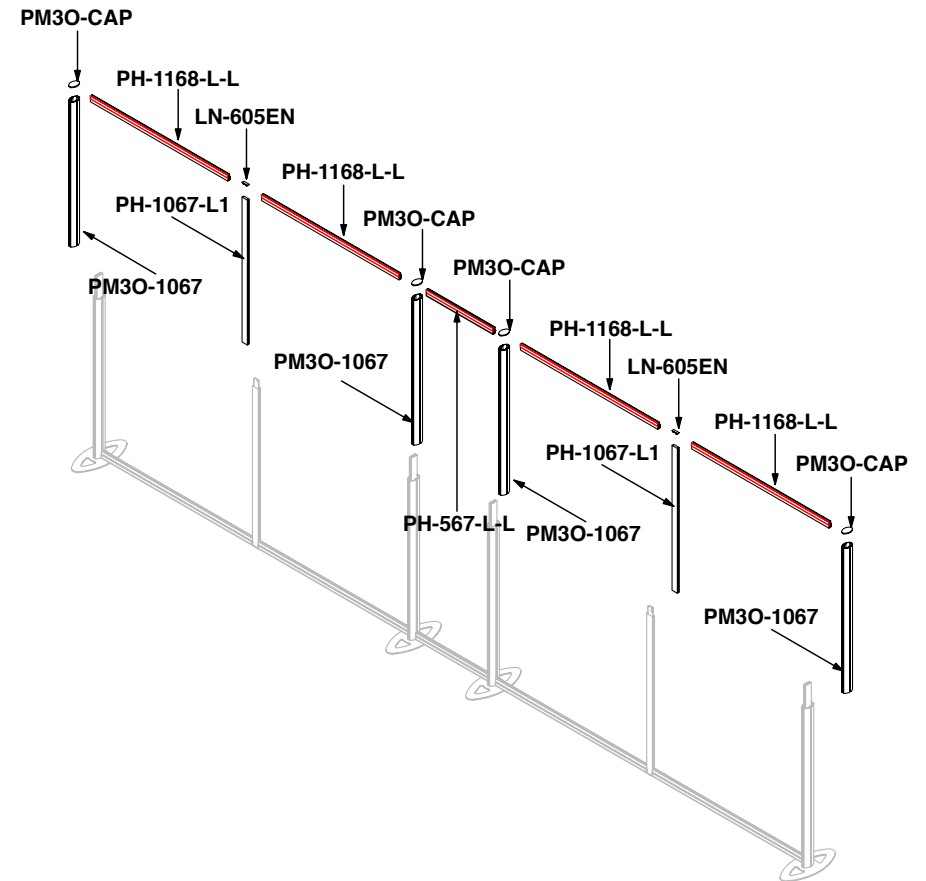
Step 1. Assemble the bottom of the frame

Using the 5MM HEX KEY, attach each PH-1168-L-L and both sides of the PH-567-L-L to the LN-FS-UPRIGHT's with the velcro facing front. Attach the opposite ends of the PH-1168-L-Ls to the PH-1067-L1 uprights using the 5MM HEX KEY. Once all are attached, use the 5MM HEX KEY to depress the IB2 lower button and insert into the top of the PH-1067-L1s, DO NOT LOCK.

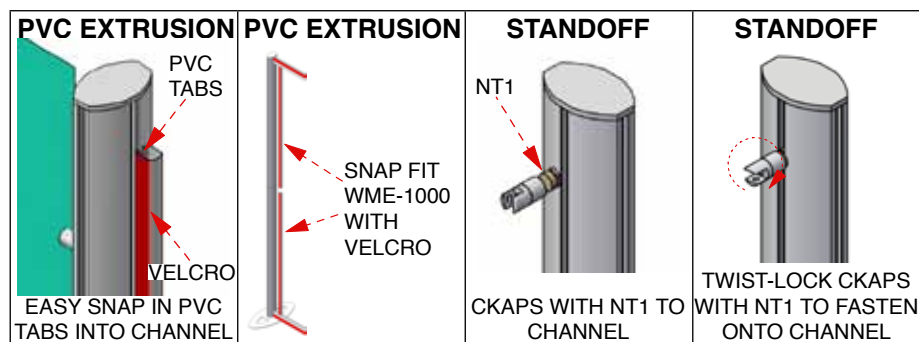
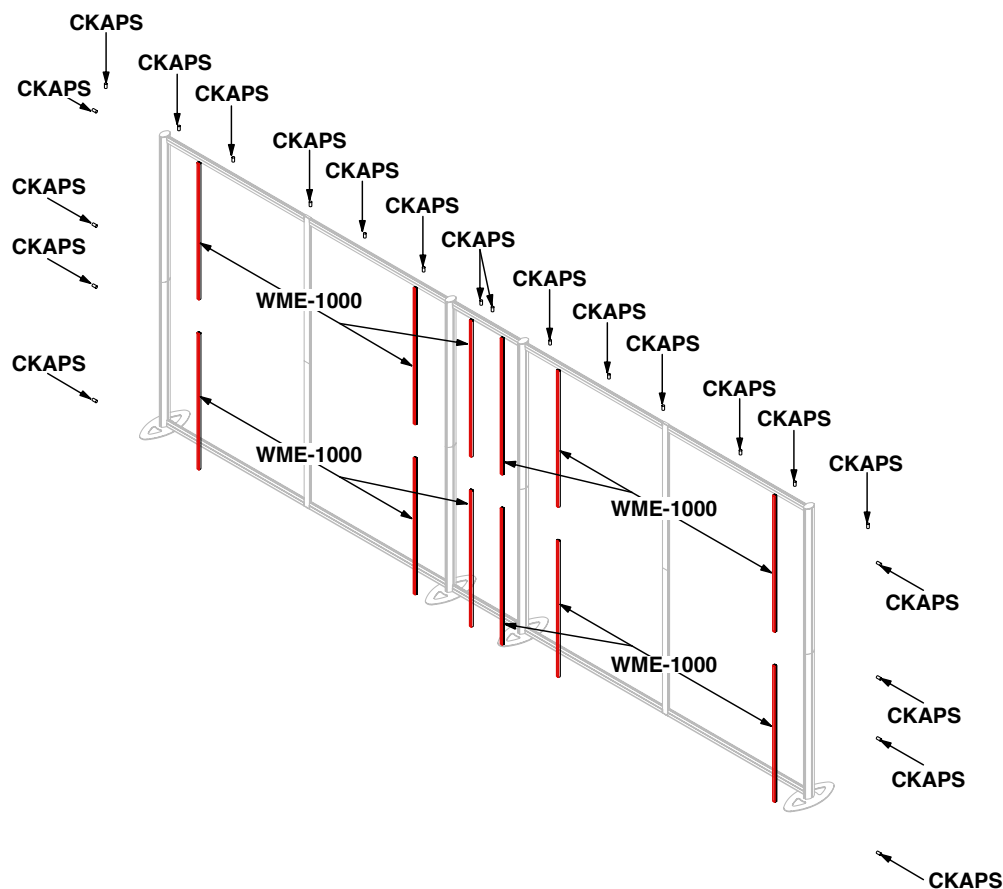


Step 2. Assemble the top of the frame

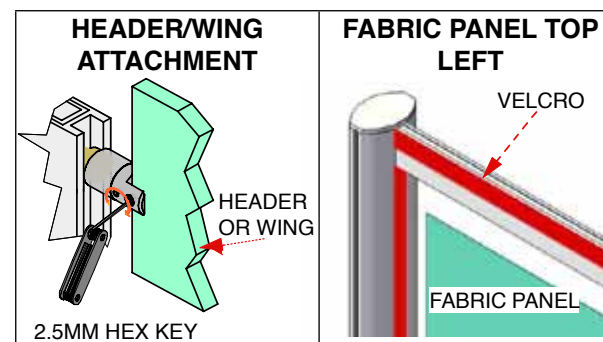
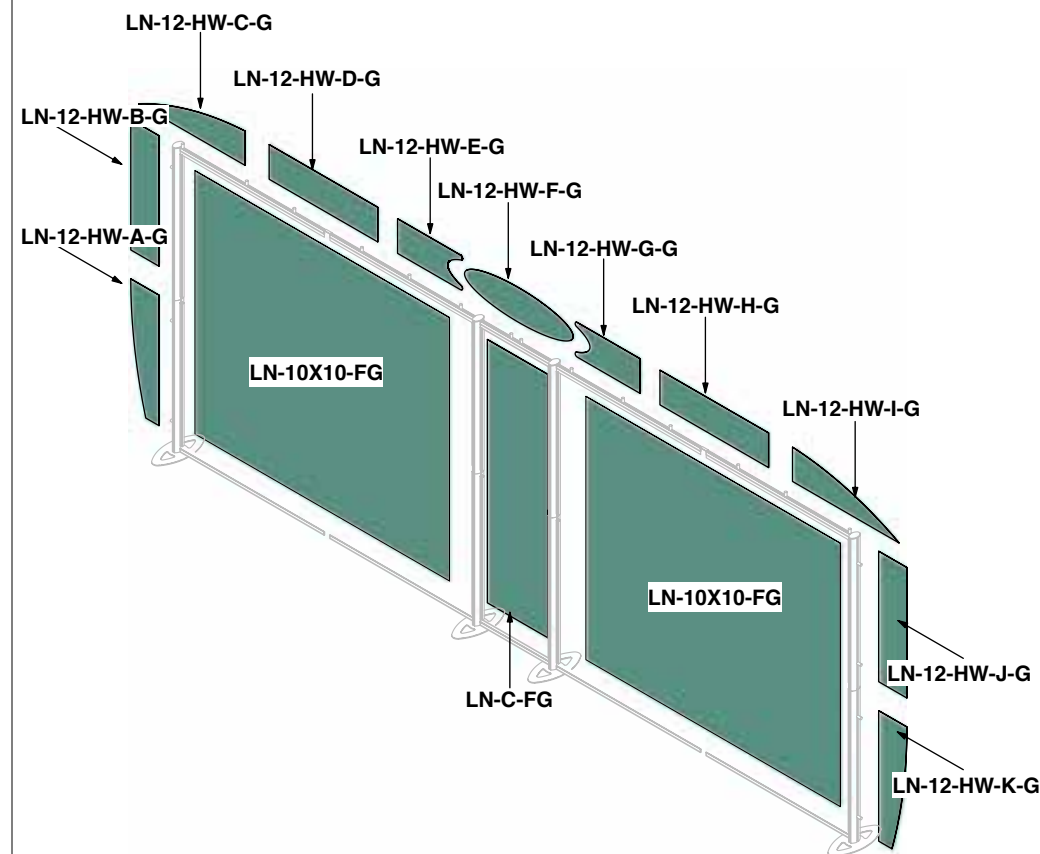
Make sure the velcro is facing towards the front and slide the left and right PM3O-1067s onto the LN-FS-UPRIGHT on the left and right ends of the frame. Push in the lock button to slide and attach the two PH-1067-L1s to the IB2s below, then lock both buttons. Attach PH-1168-L-Ls and the PH-567-L-L to the PM3O-1067s and PH-1067-L1s using the 5MM HEX KEY. The PM3O-CAPS come already attached to the PM3O-1067s.



Step 3. Attach graphic support & adhere CKAPS for graphic headers/wings
 Snap attach the WME-1000 (graphic support) onto the frame inside the left and right uprights of the left, center, and right frame sections. Make sure the velcro is facing towards the front. Insert the 22 CKAPS into the outside perimeter channels and turn clockwise to lock, other locking screws should be loose. Evenly space out the standoffs for each header or wing.

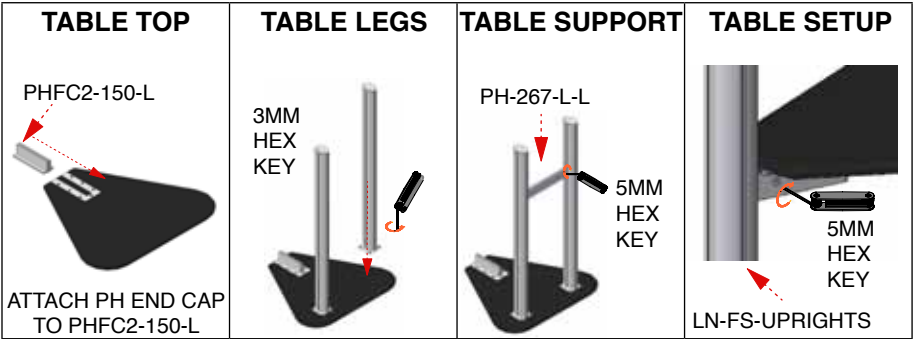
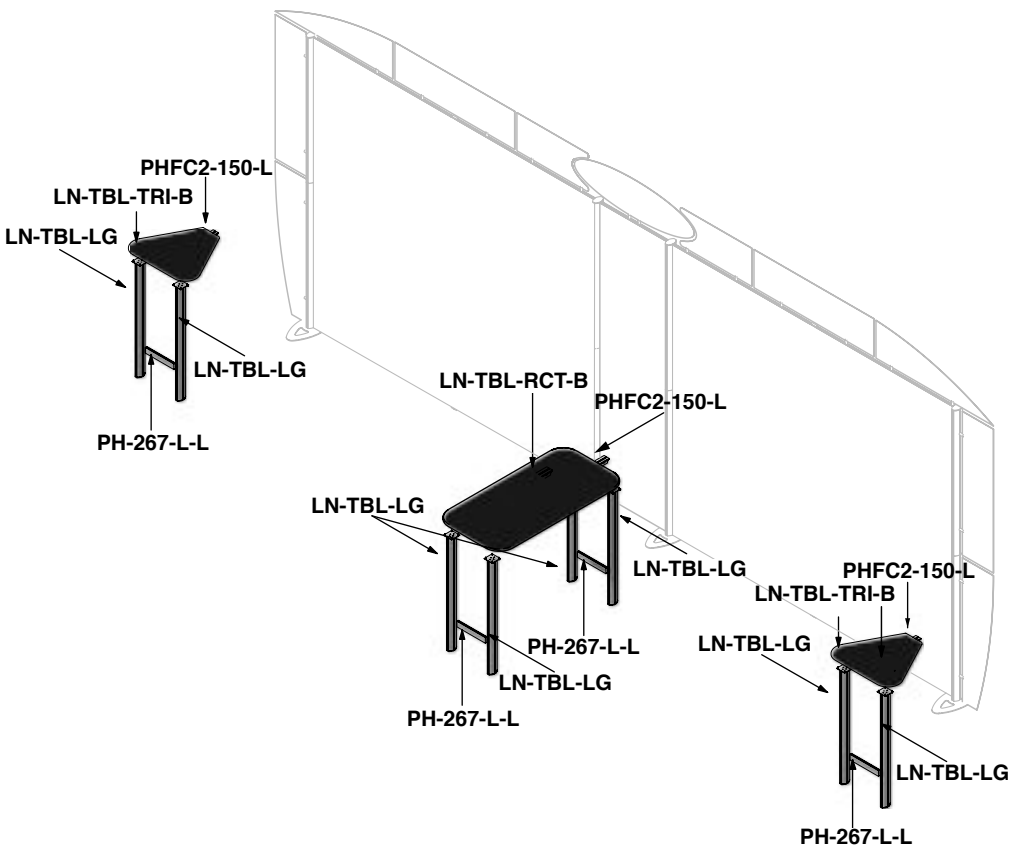


Step 4. Attach center graphic and graphic headers/wings
 Insert the panels into CKAPS 7mm wide channel, lock in the panels and tighten all of the screws. Velcro attach the LN-10X10-FG (left & right large center fabric graphics) and the LN-C-FG (center fabric graphic) to the frame starting at the top left corner. Continue to velcro attach the graphics to the frame ending in the bottom right corner.



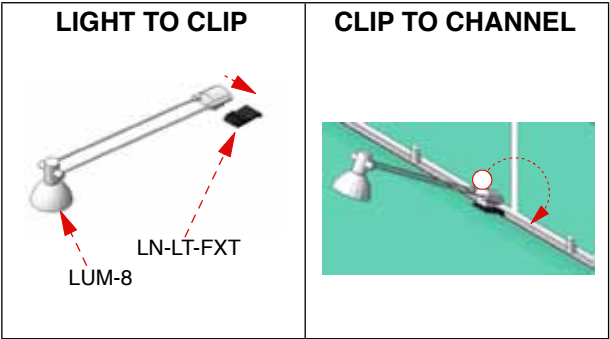
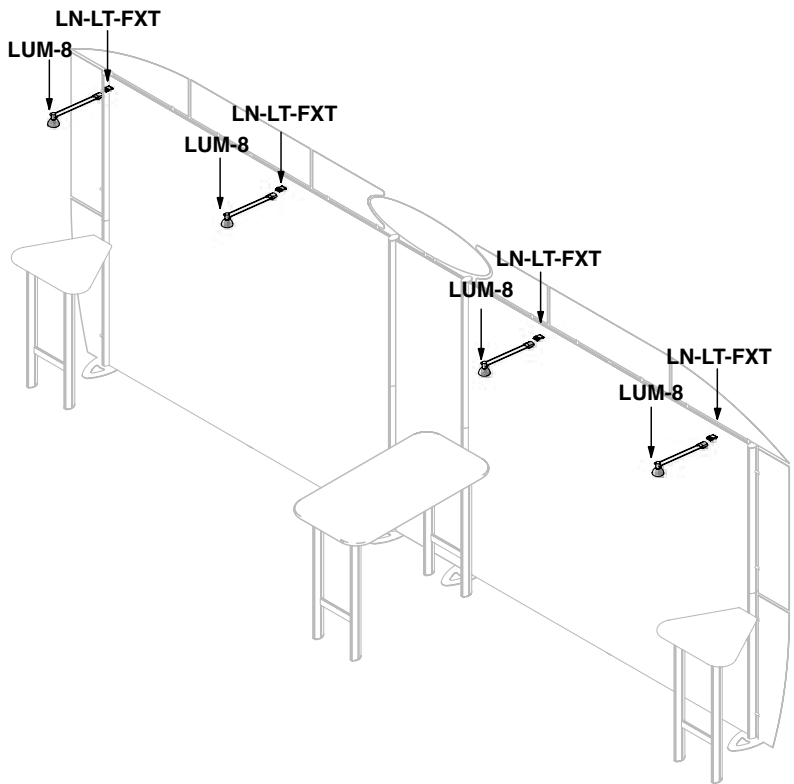
Step 5. Assemble tables & attach to backwall

Slide the PHFC2-150-L into the underside of the table. Fasten the table legs to the underside of the table top using the 3MM HEX KEY. Lock in the tables leg support, PH-267-L-L, at a desired height. Once finished turn table over and attach it to the backwall frame (LN-FS-UPRIGHT) using the 5MM HEX KEY. Repeat for all of the tables.



Step 6. Attach lights

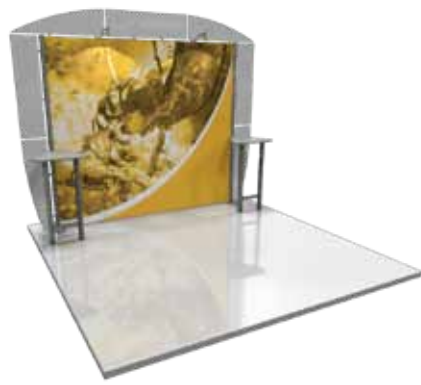
Slide the light fixture LUM-8 onto the light clip LN-LT-FXT. Lift and rest light clip onto top of horizontal channel and run the wires in between and behind the panels.



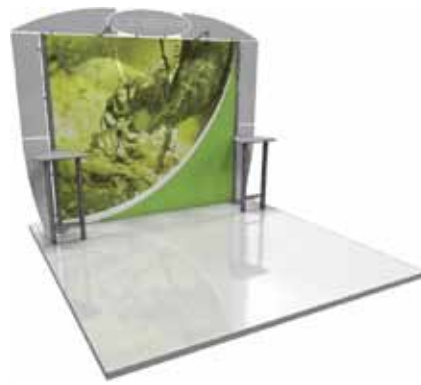
Check out these related products:



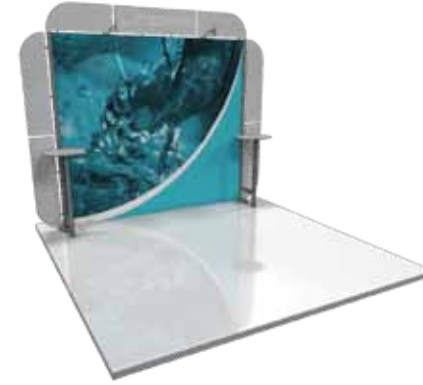
Linear Standard Kit 01



Linear Standard Kit 02



Linear Standard Kit 03



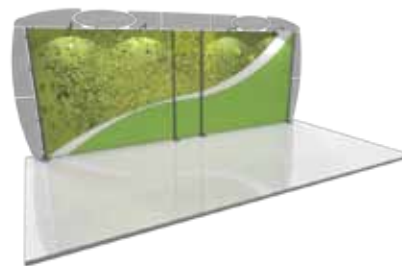
Linear Standard Kit 05



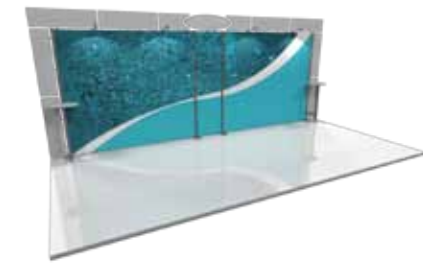
Linear Standard Kit 12



Linear Standard Kit 14



Linear Standard Kit 16



Linear Standard Kit 18