

# Formulate Designer Series 10' Backwall - Kit 12

## FMLT-DS-10-12

Formulate™ Designer Series 10ft displays have unique stylistic features and shapes, are portable and easy to assemble. The aluminum tube frame features snap-buttons and zipper pillowcase fabric graphics. All displays come in portable, wheeled transit cases. Simply pull the pillowcase fabric graphic over the frame and zip.



We are continually improving and modifying our product range and reserve the right to vary the specifications without prior notice. All dimensions and weights quoted are approximate and we accept no responsibility for variance. E&OE. See Graphic Templates for graphic bleed specifications.

## features and benefits:

- Premium aluminum tube frames with snap button assembly
- Easy to store and ship
- Quick to set up
- Weighted feet for added stability
- Zipper pillowcase fabric graphic
- Lifetime limited hardware warranty against manufacturer defects

## dimensions:

Hardware	Graphic
Assembled unit: 119.3" w x 95.9" h x 29.89" d 3030.22mm(w) x 2435.861mm(h) x 759.21mm(d)  Approximate weight with cases: 57 lbs / 25.9 kgs	Refer to related graphic template for more information.  Visit: <a href="http://www.exhibitors-handbook.com/graphic-templates">www.exhibitors-handbook.com/graphic-templates</a>
Shipping	
Packing case(s): 1 OCH2 Case  Shipping dimensions: 52" w x 29" h x 15" d 1321mm(w) x 737mm(h) x 381mm(d)  Approximate total shipping weight (includes cases & graphics): 69 lbs / 31.3 kgs	

## additional information:

Graphic material:  
Dye-sublimation zipper pillowcase fabric.

# Included In Your Kit

Tools, Components, & Connectors



ALLEN KEY SET x1



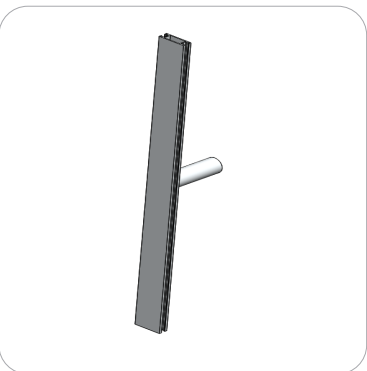
ES30 x15



TC-30-C x1



TCH-30 x2

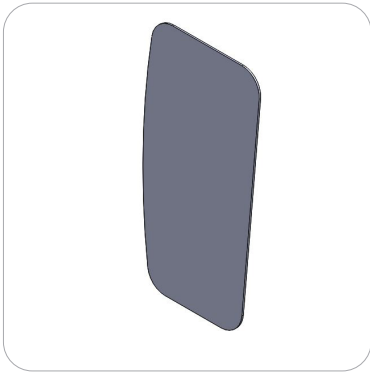


DS-10-12-A-11 X2

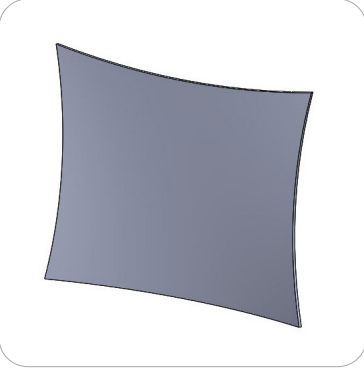


LUM-LED2-ORL-B x2

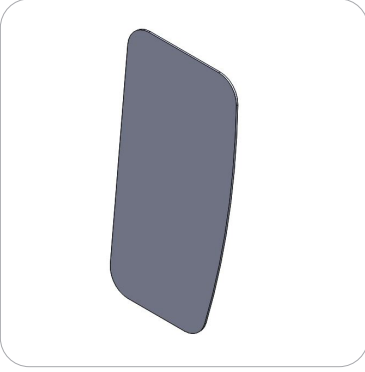
Graphics



DS-10-12-A-G



DS-10-12-B-G



DS-10-12-C-G

# Included In Your Kit

Tubes



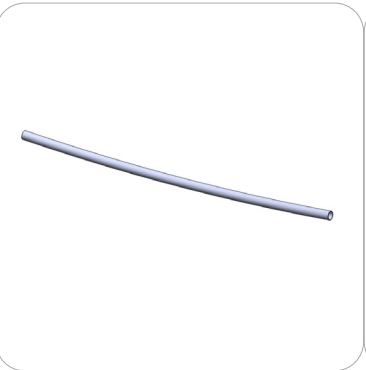
DS-10-12-A-T1 x1



DS-10-12-A-T2 x1



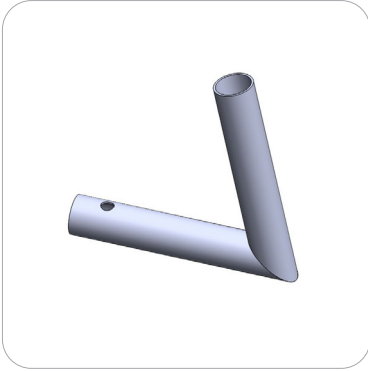
DS-10-12-A-T3 x1



DS-10-12-A-T4 x1



DS-10-12-A-T5 x1



DS-10-12-A-T6 x1



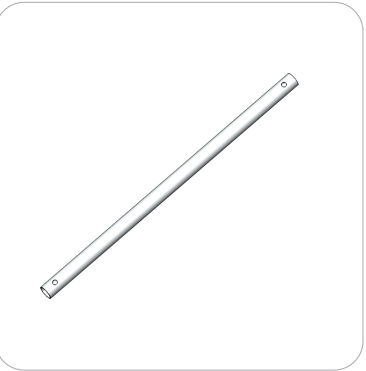
DS-10-12-A-T7 x2



DS-10-12-A-T8 x4

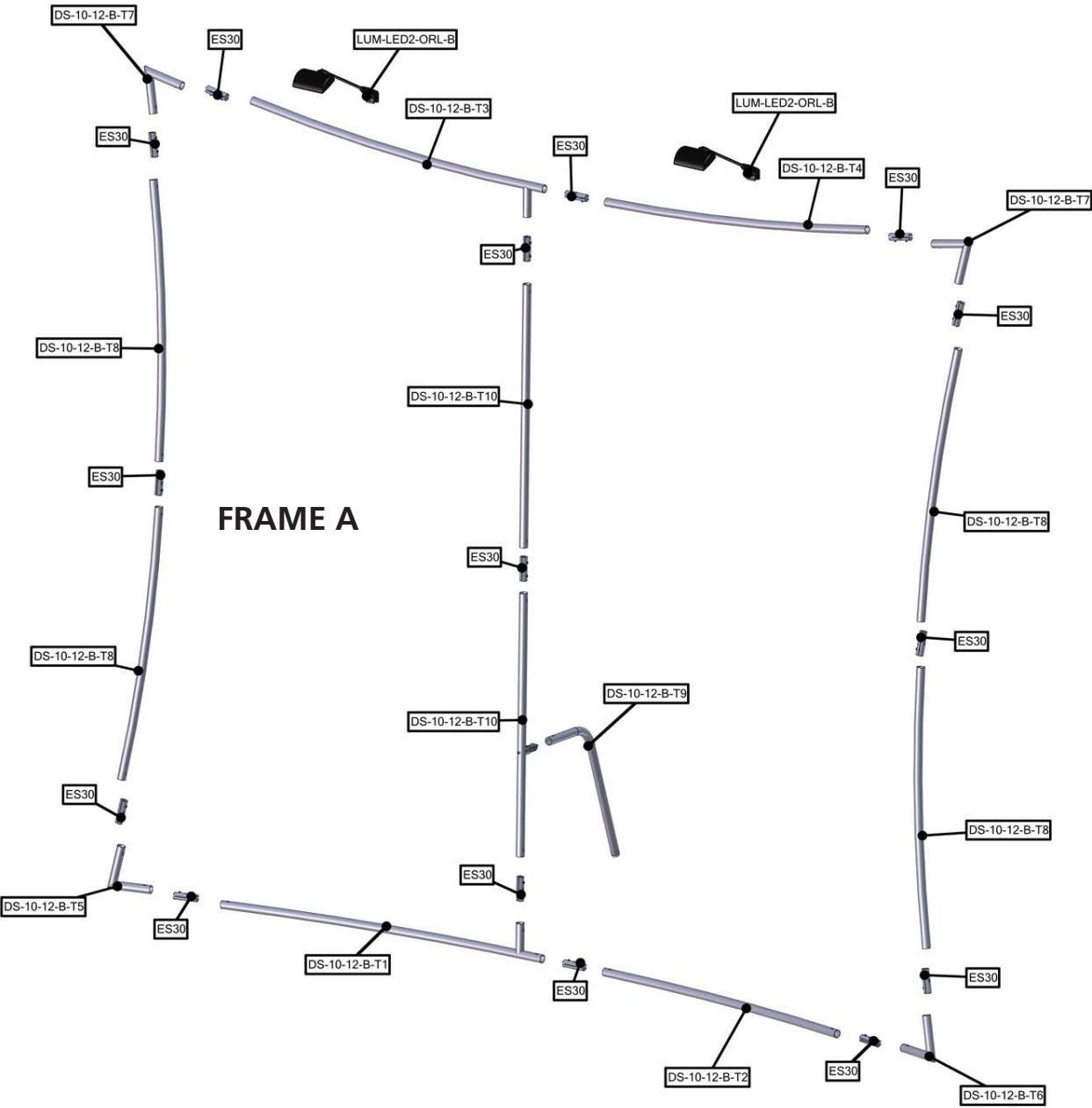


DS-10-12-A-T9 x1



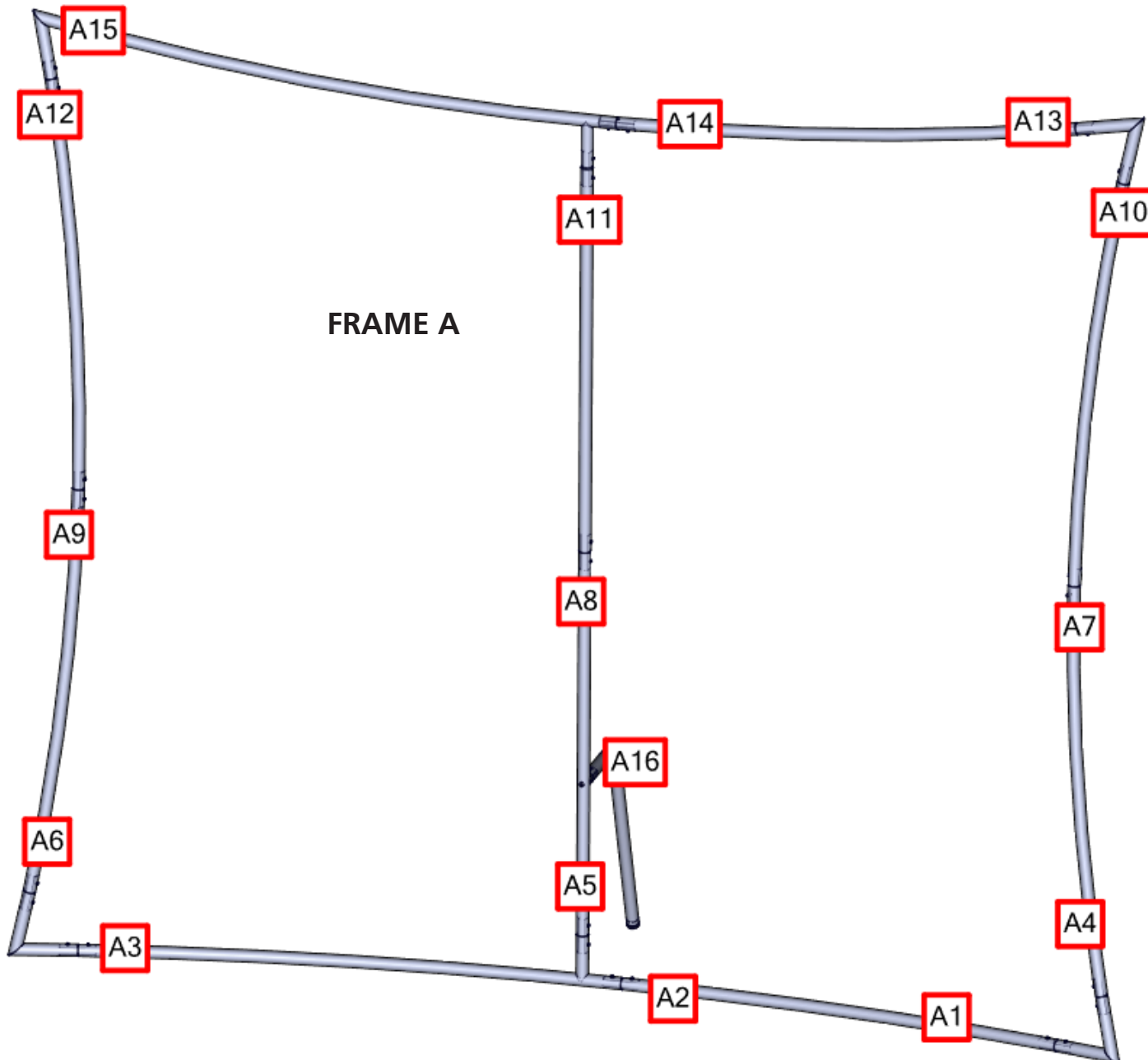
DS-10-12-A-T10 x2

# Exploded View



# Labeling Diagram

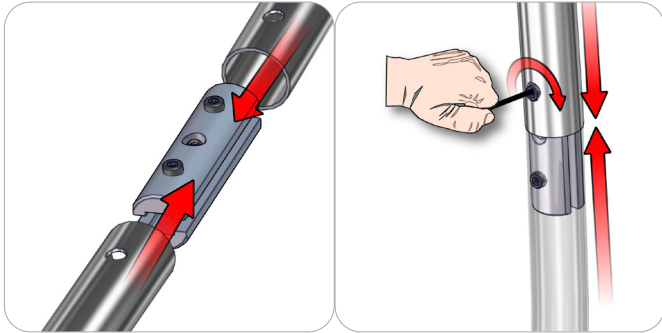
FMLT-DS-10-12



# Connection Methods

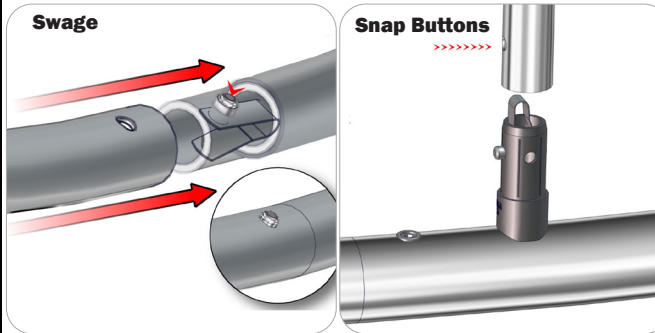
Formulate™ structures use a number of different yet simple connection methods. Your kit will include one or more of the connection methods shown below. Steps within the Kit Assembly will reference a specific method for each connection point.

## Connection Method 1: ES30 / ES50 / ES75



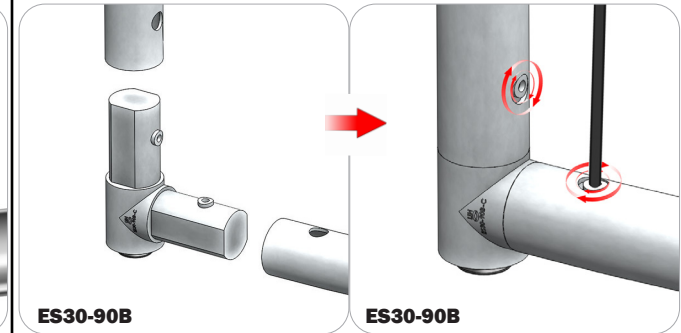
Compress the unlocked connector and slide one tube onto each end. Lock both screws carefully using your allen key tool. Be sure to lock securely, but do not overtighten.

## Connection Method 2: Snap Buttons & Swage



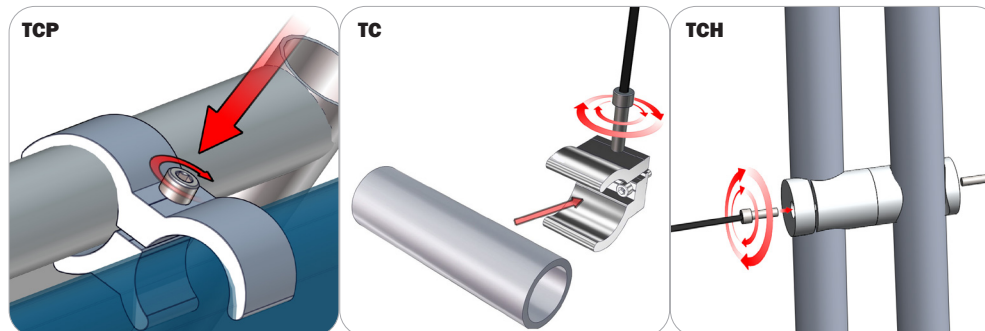
Locate the snap button on the connector or swage tube. Locate the hole on the corresponding tube. Press the snap button with your thumb and slide the tube and connector together so that the snap button snaps fully into the lock hole. To disassemble, press the snap button and pull apart.

## Connection Method 3: ES30-90B / ES30-I / ES30-C



Compress one unlocked end of the connector and slide it through one tube end. Compress the other end of the connector and slide the second tube on. Lock both screws carefully using your allen key tool. Be sure to lock securely, but do not overtighten.

## Connection Method 4: Tube Clamps



Be sure to fully assemble all frames before using clamps. With the clamp unlocked, place one tube of the first frame into the mouth of the clamp. Place the second tube (if applicable) into the second mouth of the clamp. With both frame's tubes in the clamp, be sure to lock securely, but do not overtighten.

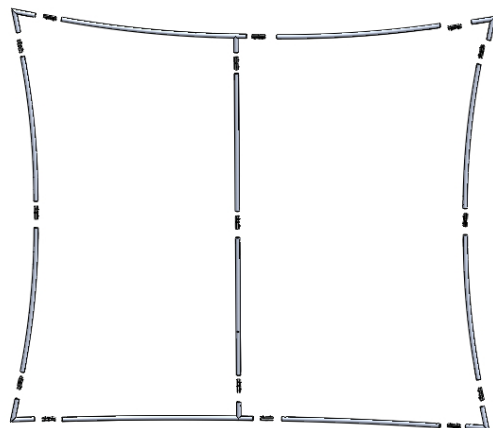
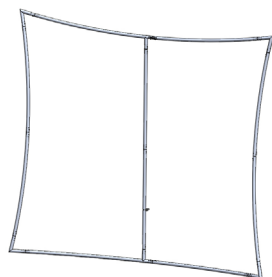
# Kit Assembly

## Step by Step

### Step 1.

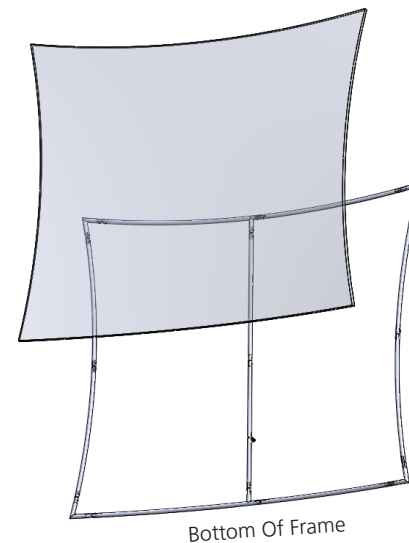
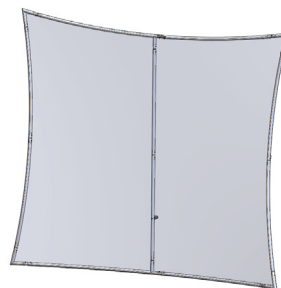
Gather the components necessary for assembling the frame and lay them flat on the floor. Assemble in the order the Labeling Diagram instructs.

Please reference Connection Method 1 for more details.



### Step 2.

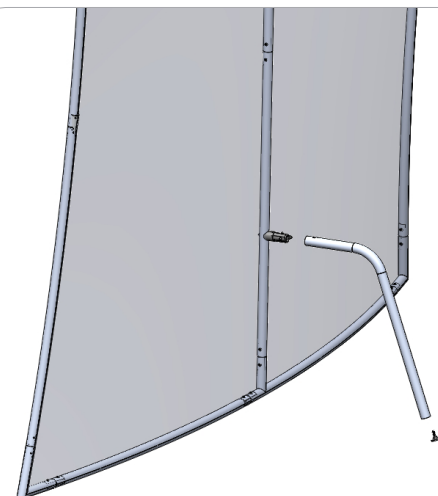
With the frame laying flat on the floor, locate your pillowcase B graphic. With the pillowcase unzipped, encase the frame by covering the frame from top to bottom.



### Step 3.

Attach the leg by snapping it into the TC-30-C connectors located on the rear side of your frame. Snap the leveling foot into the bottom of the support leg, as shown in the image right.

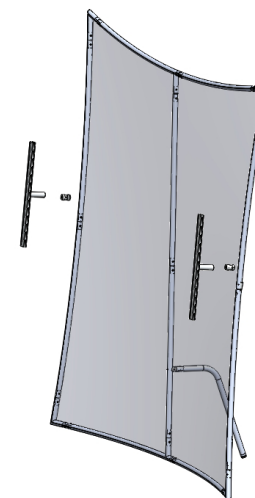
Please reference Connection Method 2 for more details.



### Step 4.

Attach the TCH-50 and Arm assemblies to the left and right side of the frame.

Please reference Connection Method 4 for more details.



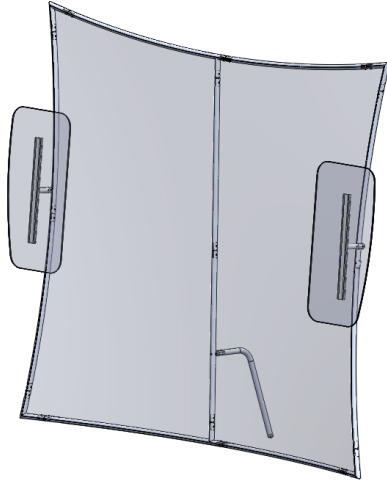
# Kit Assembly

## Step by Step

### Step 5.

Using Velcro, attach the sintra accent graphics to the flat faces of the arms.

VELCRO



### Step 6.

Attach the lights using the provided clamps.

