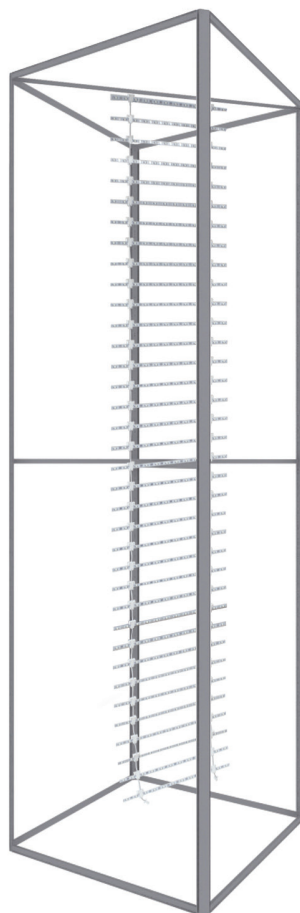


BIG SKY TOWER 60D - 4FT X 16FT (BACKLIT)

RESORT EXTRUSIONS
 PRODUCT CODE: BIGSKYT60D4X16-LLFRM



On frame On graphic



PRODUCT DESCRIPTION

The Big Sky Tower is part of the Resort Extrusion family—aluminum frames for Silicone-Edge Graphics (SEG). Custom-made on the premises, Big Sky Tower comes in varied sizes. Big Sky Tower accepts four individual custom fabric graphics, excluding top and bottom. Insert graphics after frame is constructed by tilting top on its side. Transversely, push corners of graphic into the frame's recessed groove. Then, starting midway on the frame going toward the corners, continue pushing in the straight edges of the graphic. Repeat three times. Backlit option is available.

DISPLAY DIMENSION	4' L x 4' W x 16' H
GRAPHIC DIMENSIONS	48" W x 192" H

GRAPHIC MATERIAL

UV Backlit Fabric

GRAPHIC FINISHING

Silicone beading is sewn around the perimeter of the fabric graphic. Silicone beading is hidden from view once installed.

DISPLAY CONSTRUCTION

Aluminum Extrusion Frame

LADDER LIGHTS SPECIFICATION

EACH LIGHT BEAD	.068-.43W
ANGLE	120°
OPERATING VOLTAGE	12V
TOTAL WATTAGE	350-600W MAX
TOTAL AMPERAGE	29A MAX

TRANSFORMER SPECIFICATION

OUTPUT	12V/29A
INPUT	100-120VAC/7.0A 200-240VAC/4.0A 50/60Hz

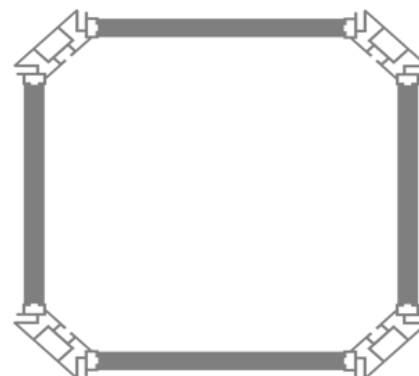
SHIPPING WEIGHTS & DIMENSIONS

Shipping Weight	116 lbs (frame only) 124 lbs (with graphics)
Shipping Dimensions	48" H x 18" W x 11.5" D

GRAPHIC TURN AROUND TIME

2 business days after proof approval

AVAILABILITY	CA
---------------------	----



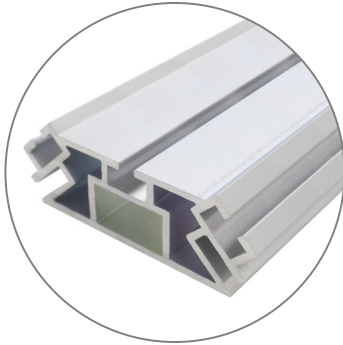
Top View

BIG SKY TOWER 60D - 4FT X 16FT (BACKLIT)

RESORT EXTRUSIONS

PRODUCT CODE: BIGSKYT60D4X16-LLFRM

PARTS LIST



Qty 16 - 60D Vertical Extrusions



Qty 8 - 40CG Horizontal Extrusions



Qty 12 - Split Connectors



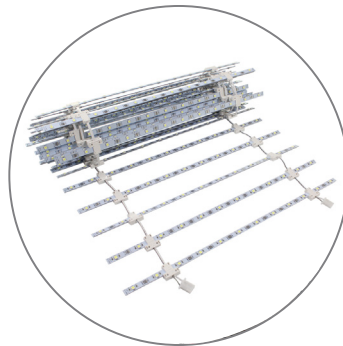
Qty 3 - Support Struts



Qty 1 - Torx Key



Qty 2 - Eye Hooks



Qty 1 - Ladder Lights



Qty 1 - Power Cord



Qty 1 - Ladder Light Wires



Qty 1 - Transformer



Qty 1 - La Caja Hard Case
With Wheels

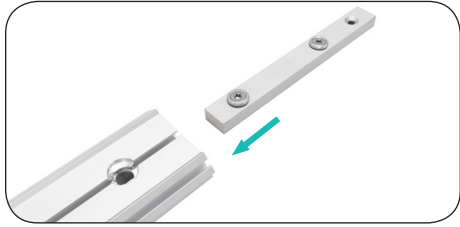
BIG SKY TOWER 60D - 4FT X 16FT (BACKLIT)

RESORT EXTRUSIONS

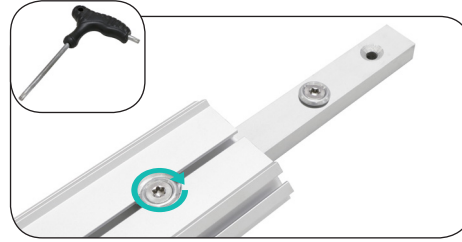
PRODUCT CODE: BIGSKYT60D4X16-LLFRM

SET UP INSTRUCTIONS 1/2

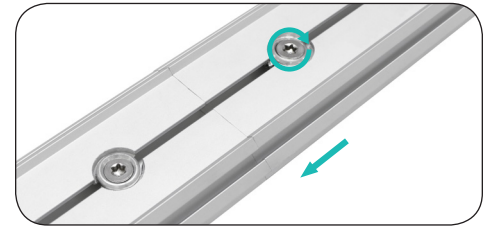
1. Attach Split Connectors to Side Extrusions:



a. Remove the screw and insert split connector into one end of the extrusion. Match like colored numbers together. (e.g. 3-3, 4-4).

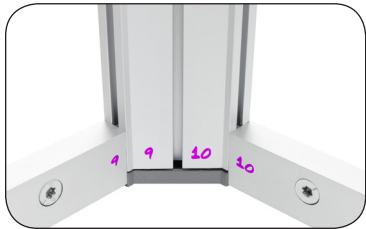


b. Tighten screw to lock it into place. Remove the remaining screw from the connector.



c. Then slide the other extrusion onto split connector. Make sure extrusions are flush and tighten the screw to secure connection.

2. Locate the Bottom and Side Extrusions:



a. See colored numbers on each extrusion piece. Match like colored numbers together. (e.g. 3-3, 4-4).



b. End Lock is already attached to opposite ends of extrusion.

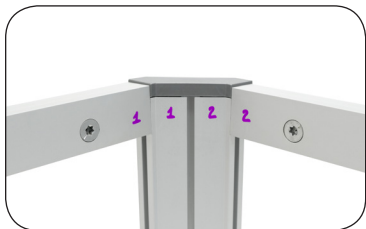


c. Connect horizontal extrusion to the bottom of a vertical extrusion, screw facing inward.



d. Connect bottom extrusions together and use **torx key** to tighten.

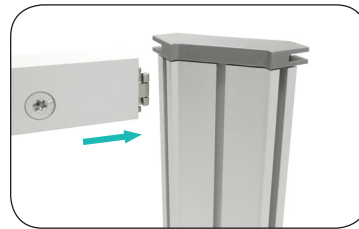
3. Locate the Top and Side Extrusions:



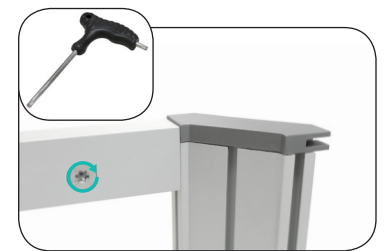
a. See colored numbers on each extrusion piece. Match like colored numbers together. (e.g. 3-3, 4-4).



b. End Lock is already attached to opposite ends of extrusion.

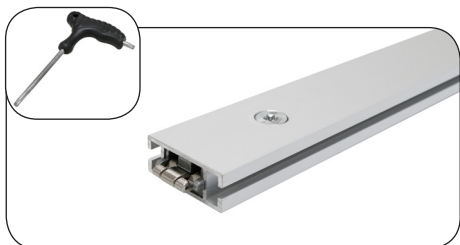


c. Connect horizontal extrusion to the top of a vertical extrusion, screw facing inward.

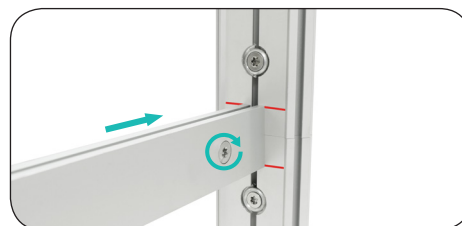


d. Connect the top extrusions together and use **torx key** to tighten.

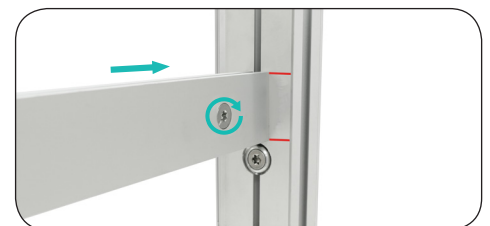
4. Attach Support Strut to Frame:



a. End Lock is already attached to opposite ends of Support Strut.



b. Align Support Struts within marked lines, and insert End Lock into top and bottom grooves of frame.



c. Add a second support strut to align marked lines and tighten screws with **torx key** to secure connection.

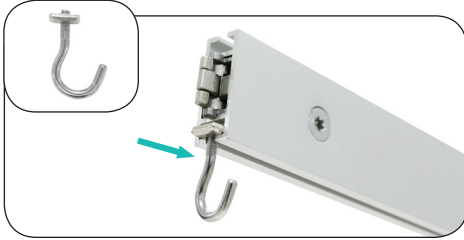
BIG SKY TOWER 60D - 4FT X 16FT (BACKLIT)

RESORT EXTRUSIONS

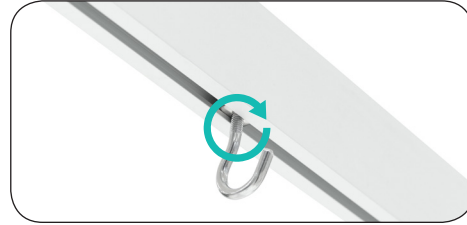
PRODUCT CODE: BIGSKYT60D4X16-LLFRM

SET UP INSTRUCTIONS 2/2

5. Attach Light Hooks:



a. Eye Hooks: Insert light hooks into the groove in one end of the extrusion.

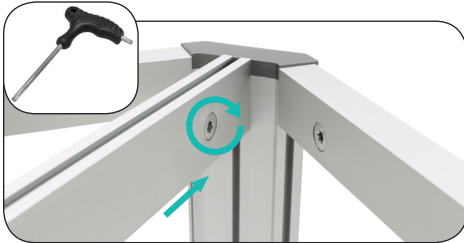


b. Slide the light hooks into the groove and place them in the center. Tighten Hook.



c. Make sure light hooks are placed far apart for hooking the LED Ladder Lights.

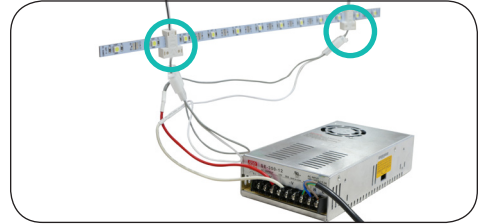
6. Hook Ladder Lights:



a. Place extrusion with the light hooks on top of the extrusion and connect together.



b. Hang ladder LED lights on hooks and drape them down inside the wire.



c. The transformer comes pre-wired. Connect the wiring from transformer to the 2 plugs at the bottom of the ladder lights.