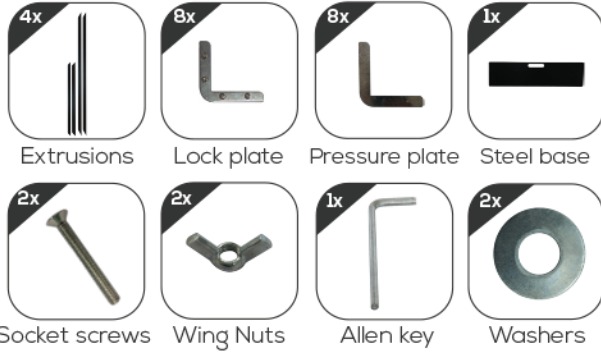


PARTS GUIDE

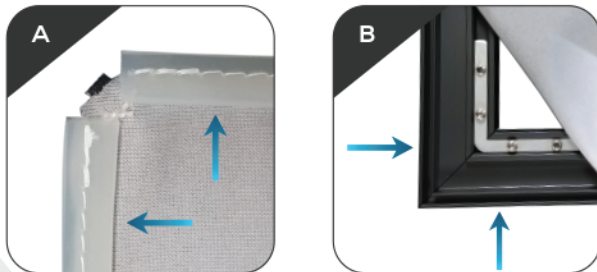
Please remove all parts from the package and review them.
Contact your service representative if there are any missing parts.



GRAPHIC MOUNTING GUIDE

Step 1

- Locate the silicone edge beading on the back of the graphic, which is sewn to the back perimeter.
- In each corner, insert the silicone edge beading into the groove.



Step 2

- On each side, insert the remainder of the beading.
- The graphic should appear flush and completely tucked into the frame. Repeat the process on the back side if using a 2nd graphic.



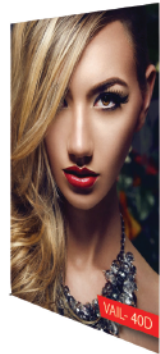
ADDITIONAL RESORT EXTRUSION STYLES



ASPEN
Fabric Frame



ASPEN
Fabric Frame Backwall



VAILS



ASPEN
T-Leg



BIG SKY



ALPINE BOOTH

ASPEN ONLYX

SET UP INSTRUCTIONS



INSTALLATION STEPS

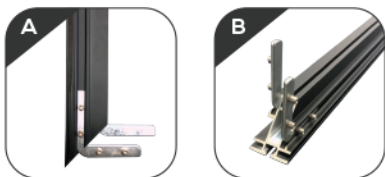
Step 1

Gather all 4 of the extrusions and lay them out on a flat surface. The extrusions will be linked together using the lock and pressure plates.



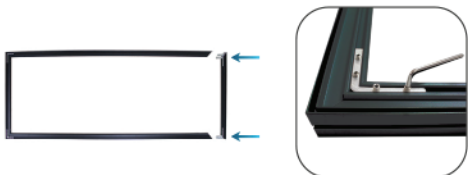
Step 4

Repeat step 3 on the back side of the extrusion. Then repeat the same step on the opposite end.



Step 7

Repeat steps 2-5 for the last remaining extrusion. Tighten all socket screws with the 3mm allen key.



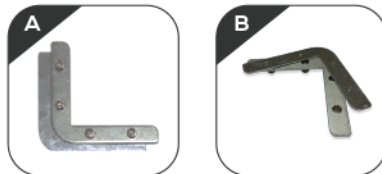
Step 10

Here you will be inserting both socket screws from the bottom, through the steel base. It is recommended to work off the edge of a table.



Step 2

Align the lock plate and pressure plate together. Make sure that the socket screws are recessed enough so the two pieces sit flush together.



Step 5

Slide in both adjacent extrusions. These extrusions should match as a pair in length.



Step 8

The frame is complete and is now ready for the base to be installed.



Step 11

From the top, slide on a washer and then screw on a wing nut until it is flush with the washer. Repeat for the 2nd bolt. Take the 5mm allen key that is provided and tighten the socket screws.



Step 3

Insert the aligned pieces completely into the slot. Insertion begins at either end of the extrusion. DO NOT TIGHTEN the socket screws.



Step 6

Make sure the corners of the extrusions are flush.



Step 9

Locate the (2) pre-fabricated holes on the bottom extrusion.



Step 12

Stand the frame upright. The frame is now ready to be fitted with the silicone edge graphic.

