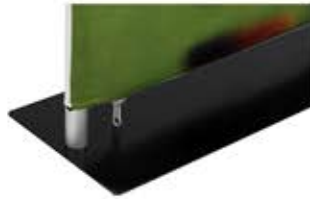
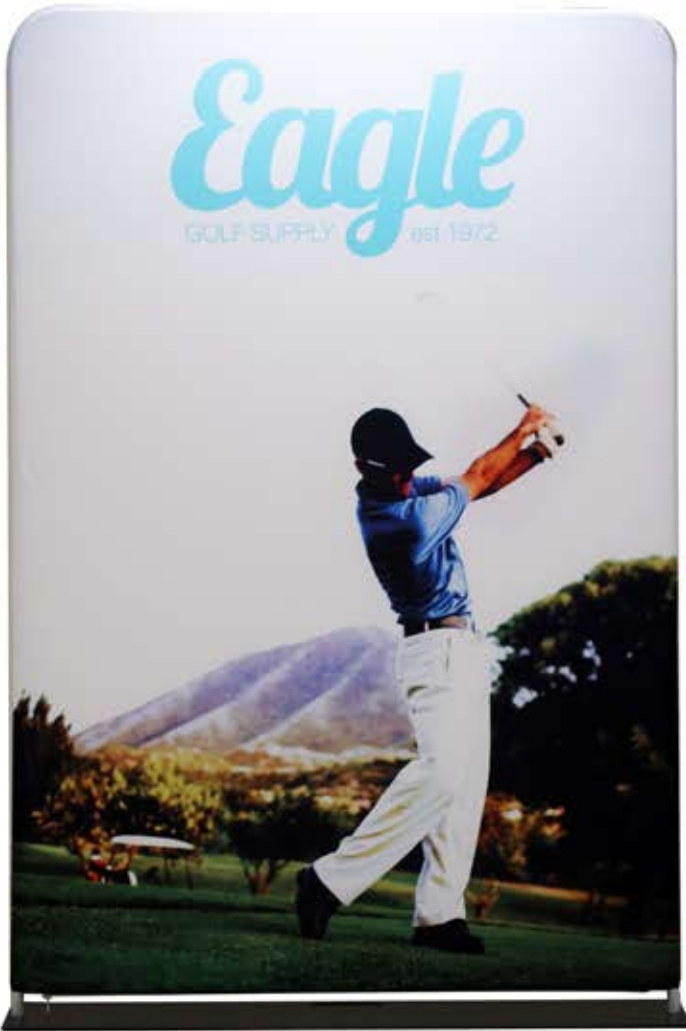


EZ EXTEND 60"



Shown with standard packaging



Shown with optional Silver Bag

Product Features

Expedite your banner stand setup time while adding lavish appeal with our newest EZ Tube fabric display—the EZ Extend! Hardware comes stock at 7.5ft and 5.5ft tall with height options of, 8.5ft, 9.5ft and 11.5ft with the use of optional 2ft extension poles. Customize a single-sided (choose white or black back fabric) or double-sided dye-sublimated stretch fabric print. To assemble, secure the longest vertical poles onto the black steel base using the included allen wrench. Add the bottom horizontal support pole and secure. Snap on the remaining vertical poles, then top frame with the curved bar to complete. Tilt or lay down EZ Extend to swiftly drape with the pillowcase graphic. Using the industrial-size zipper, zip underneath the bottom support pole, maximizing fabric tension.

Display Dimension	61"W x 66", 90", 114" or 138"H x 9.75" D
Graphic Size	62"W x 66"H, 90"H, 112"H, or 138"H

Graphic Material

Stretch fabric

Graphic Finishing

Sewn on the left, right and top, with a zipper at the bottom

Construction

Steel base

Aluminum tube frame

Weights - Dimensions

Shipping Weight	25 lbs (stand only)
	28 lbs (with graphic)
Shipping Dimensions	63" x 11" x 4"

Package Includes

- (1) Steel base
- (2) 32" tube
- (4) 24" tube
- (1) Top tube w/corners
- (1) Bottom Horizontal tube w/screws

Warranty

Life Time on Stand
1 Year on Graphic

Graphic Specification

62" x 66", 38" x 90", 38" x 114", or 38" x 138"

Graphic Turnaround Time is 2 business days for up to 2 sets